

# Eggcellent Easter Scene

Designed by  
Cheryl A. Granda  
©2007 Glendon Place  
(Free Design - Not For Resale)

## General Information

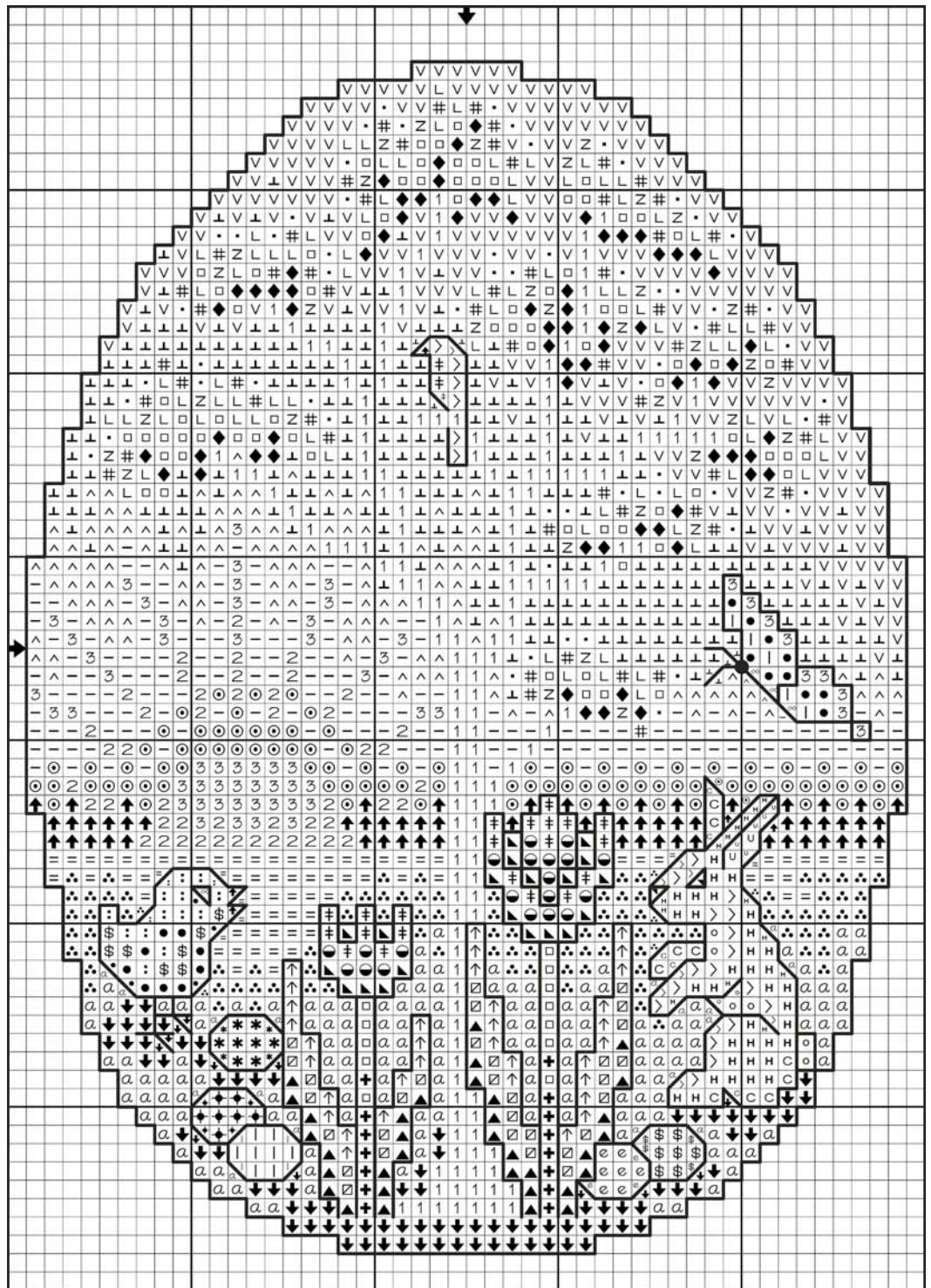
Stitched on 28 ct Ray of Light  
Lugana (Item #3270/203) by  
Zweigart. Stitched area is  
50w X 70h with a stitch count of  
48w X 65h. Design area 3 1/2" X  
4 3/4". A total of 31 Anchor/  
DMC colors, 3 colors of Kreinik  
#4 Very Fine Braid and 3 colors  
of Mill Hill Beads used in de-  
sign.

## Stitching Details

- Stitched using two strands of floss over two threads of fabric
- Backstitch with one strand of floss
- Attach beads with Anchor/DMC 1/B5200.
- Make a french knot with Anchor/DMC 403/310 for butterfly's head

## Backstitching

- Butterfly with 403/310
- Chick's body with 328/3341
- Chick's eye and feet with 403/310
- Eggs with same color they are stitched in
- Rabbit with 380/938
- Robin with 379/3863
- Tulip - tops with 29/891, stems and leaves with 218/319
- Outside perimeter of egg with 1 strand of Kreinik 028



Sym	Kreinik	Color
3	028	Citron
2	127	Yellow Orange
1	021HL	Copper Hi Lustre
Sym	Mill Hill	Color
#	00145	Pink
.	00479	White
Z	02005	Dusty Rose
Sym	Anchor/DMC	Color
BS	380/938	Fudge
BS	403/310	Black

Sym	Anchor	DMC	Color
^	1	B5200	Snow White
#	25	3716	Carnation LT
●	27	893	Carnation Med
▲	29	891	Carnation DK
u	73	963	Ant. Rose VY LT
*	92	553	Plum Med
↓	128	775	Cobalt Blue LT
∨	129	3325	Cobalt Blue
↑	215	320	Juniper Med LT
⊠	217	367	Juniper Med DK
▲	218	319	Juniper DK

Sym	Anchor	DMC	Color
□	238	703	Spring Green Med
◆	242	989	Grass Green Med LT
+	245	986	Grass Green DK
⊥	253	472	Parrot Green VY LT
=	259	772	Loden Green VY LT
∴	264	3348	Avocado VY LT
α	265	3347	Avocado LT
↓	267	3346	Avocado Med
:	292	3078	Jonquil VY LT
⊘	295	727	Jonquil Med LT
●	302	743	Citrus Med LT

Sym	Anchor	DMC	Color
⊙	311	3855	Tangerine VY LT
	328	3341	Melon LT
>	376	543	Fawn LT
H	378	3864	Fawn Med
c	379	3863	Fawn DK
-	386	3823	Citrus VY LT
o	926	712	Ecry VY LT
↑	1002	977	Antique Gold LT
e	1030	3746	Thistle Med DK
+	1089	3843	Electric Blue Med
▼	403	310	Black (1/4 stitches)